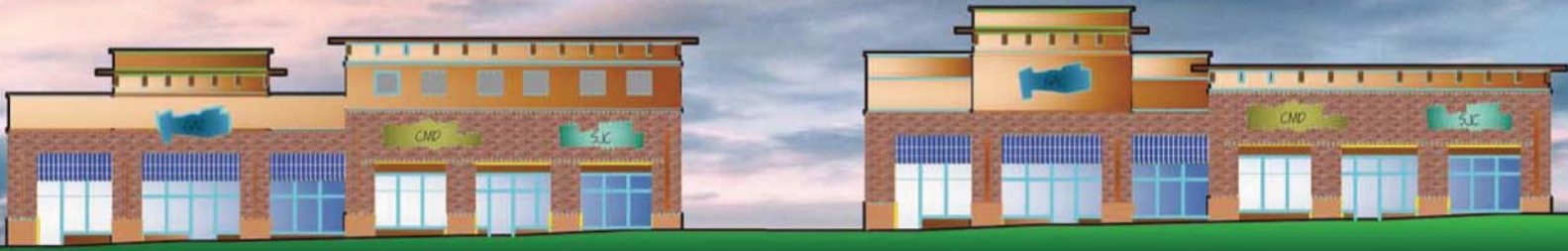


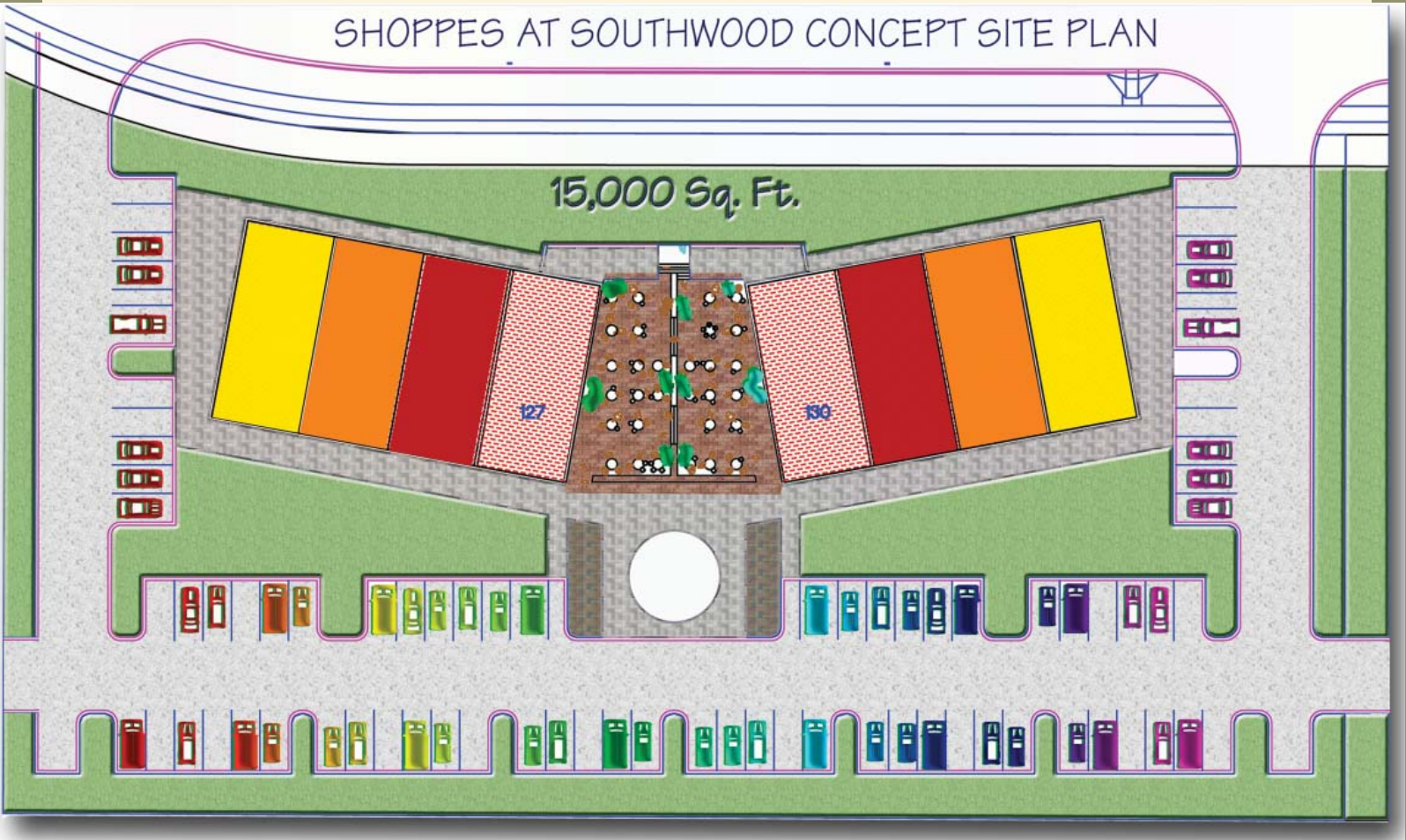
SHOPPES AT SOUTHWOOD

Capital Circle & Blair Stone Road • Tallahassee, FL 32301



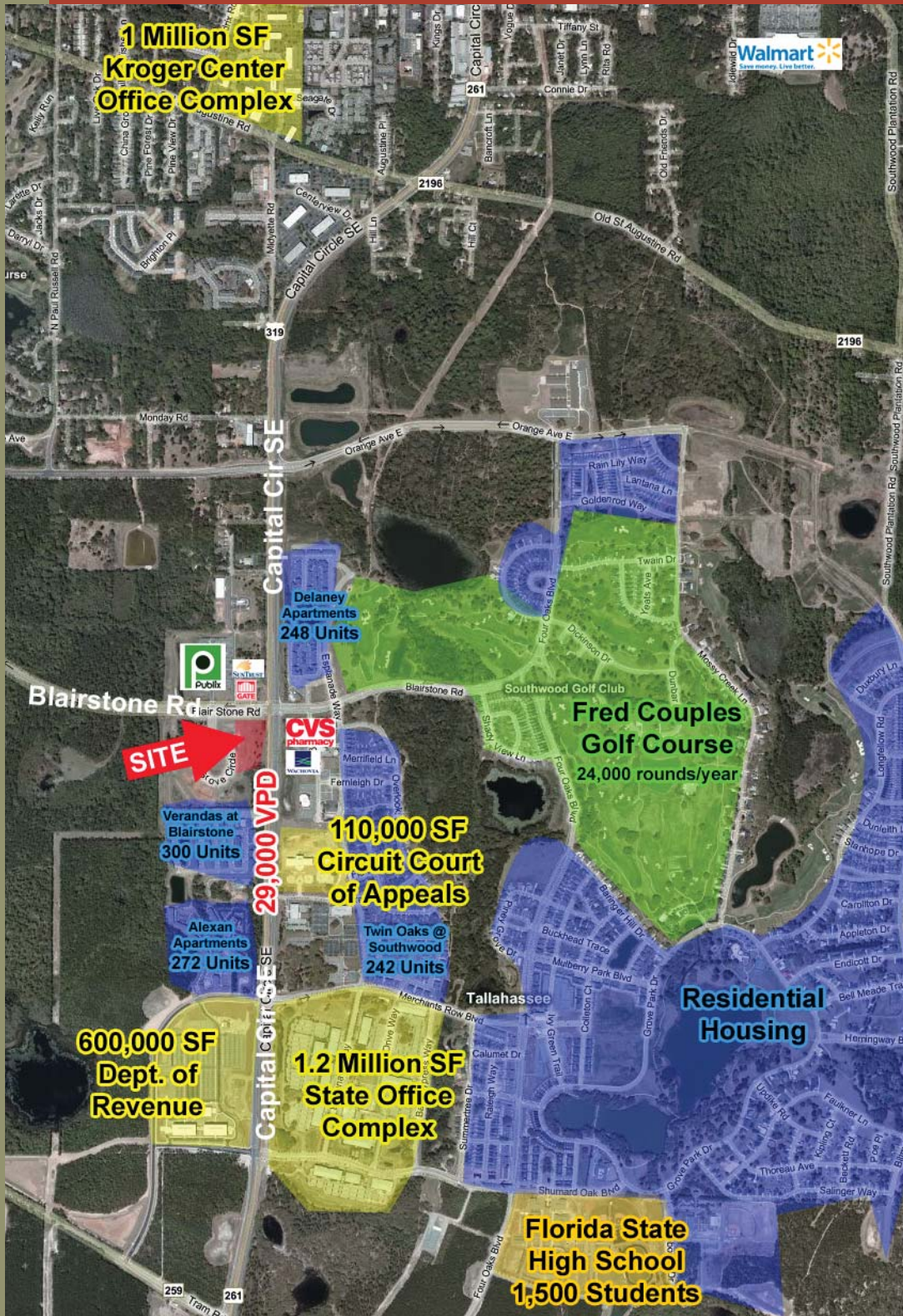
COMING SOON: RETAIL SPACE FOR LEASE

SHOPPES AT SOUTHWOOD CONCEPT SITE PLAN



SHOPPES AT SOUTHWOOD

UNITS FOR LEASE



AREA HIGHLIGHTS

- Located within a 3,300-acre master planned community that includes over 4,700 units.
- Impressively high median household income of \$99,000 for Southwood residents.
- Largest amount of office market square footage is located in Southeast Tallahassee at 2.9 million SF.
- Southwood was ranked as the #1 community among Florida's "Five New Urban Communities to Watch" by Florida Travel & Life magazine.

UPDATED NEWS

- Recently Constructed - 600,000 SF Dept. of Revenue
110,000 SF Circuit Court
- 12,387 Employees work within a 2 mile radius.
- Residential Population of 9,744 in 2 mile radius.

Murphy Land and Retail Services

11555 Central Parkway • Suite 1102 • Jacksonville, FL 32224

Clint Murphy (904) 742-2180 | Email: cmurphy@murphylandretail.com