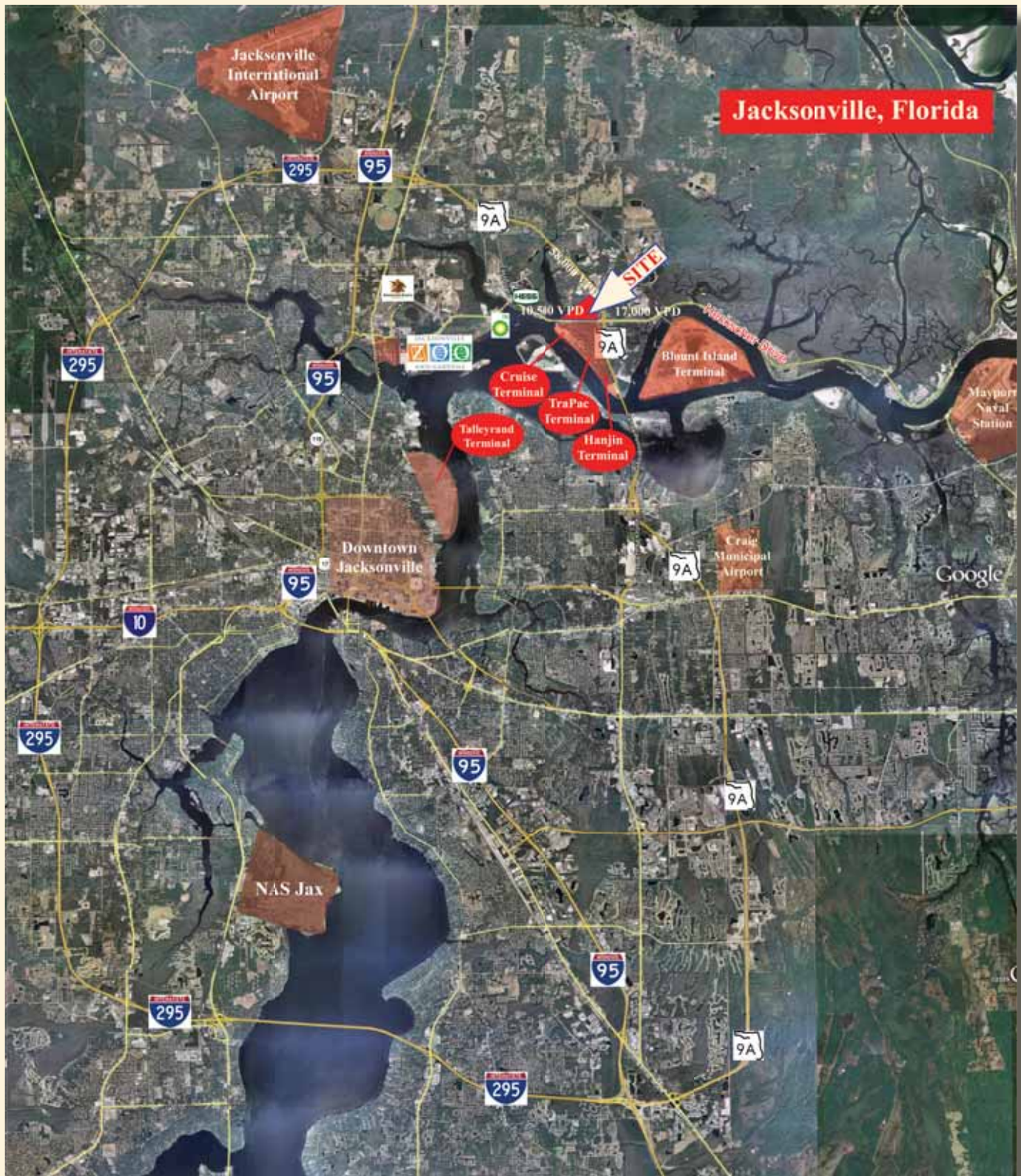


OUTPARCELS AVAILABLE

FOR SALE OR GROUND LEASE - JACKSONVILLE, FL



Murphy Land and Retail Services

11555 Central Parkway • Suite 1102 • Jacksonville, FL 32224

Carrie Smith (904) 645-7143 | Email: csmith@murphylandretail.com

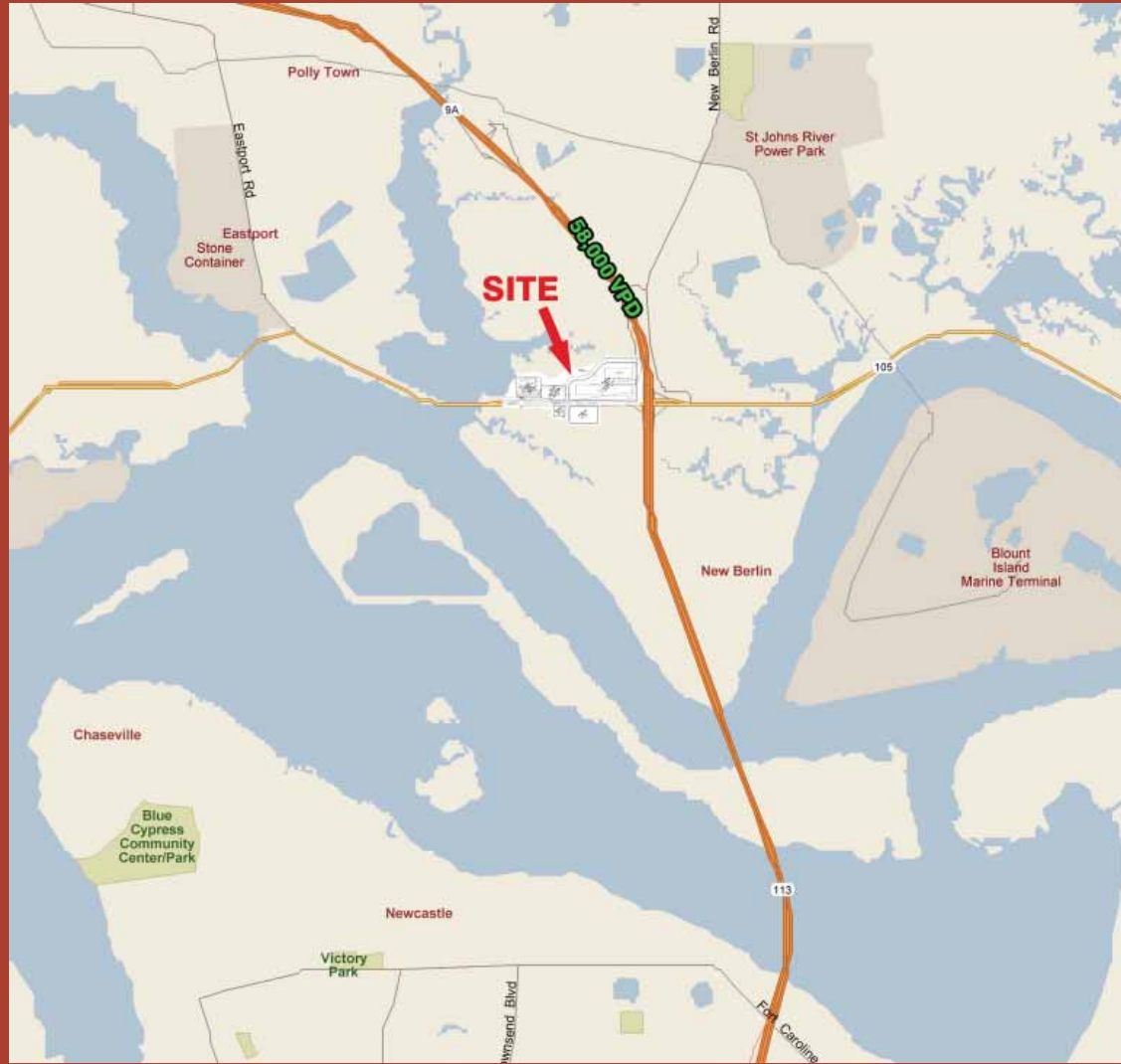
Stuart Ratcliffe (904) 891-5801 | Email: sratcliffe@murphylandretail.com

HECKSCHER DRIVE AND SR-9A

Jacksonville, Florida 32226

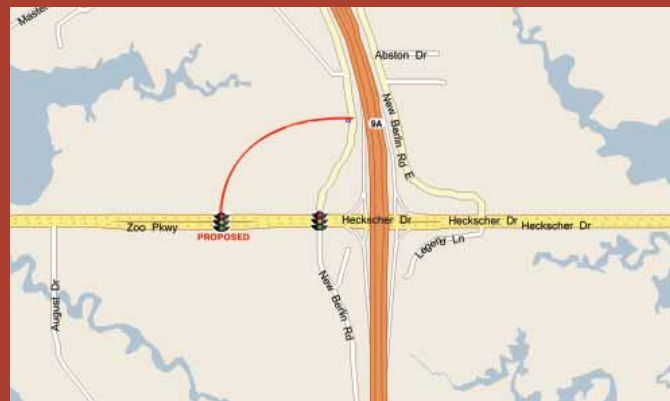
AREA FACTS:

- JaxPort Operates More than 20 Shipping Lines that span more than 50 Countries
- Home to Carnival Cruise Line with over 130,000 passengers departing each year.
- JaxPort Estimated Local Impact is \$2.7 Billion Annually
- Locally more than 50,000 Jobs Created from recently added Shipping Lines: Hanjin Shipping Company and Mitsui OSK Line
- Over 58,000 Vehicles Per Day on 9-A Interchange



SITE FACTS:

- Outparcels Range from .5 Acres and Up
- New Road Approved at site to connect New Berlin Road
- Proposed Traffic Signal at Intersection of Heckscher Drive
- Off-Site Water Retention In Place



Approved Road to connect New Berlin Road to Heckscher Drive

Murphy Land and Retail Services

11555 Central Parkway • Suite 1102 • Jacksonville, FL 32224

Carrie Smith (904) 645-7143 | Email: csmith@murphylandretail.com

Stuart Ratcliffe (904) 891-5801 | Email: sratcliffe@murphylandretail.com