

# CLOSED BUDDY FREDDY'S

7700 Merrill Road • Jacksonville, FL 32225

## FOR SALE - 1.5 ACRES 8,000 SF BUILDING



### SITE HIGHLIGHTS

- Located just West of 9A Belt loop
- 17% increase in population over last 6 years
- 20% increase in the number of households
- Full Ingress / Egress
- Located at Signaled Intersection

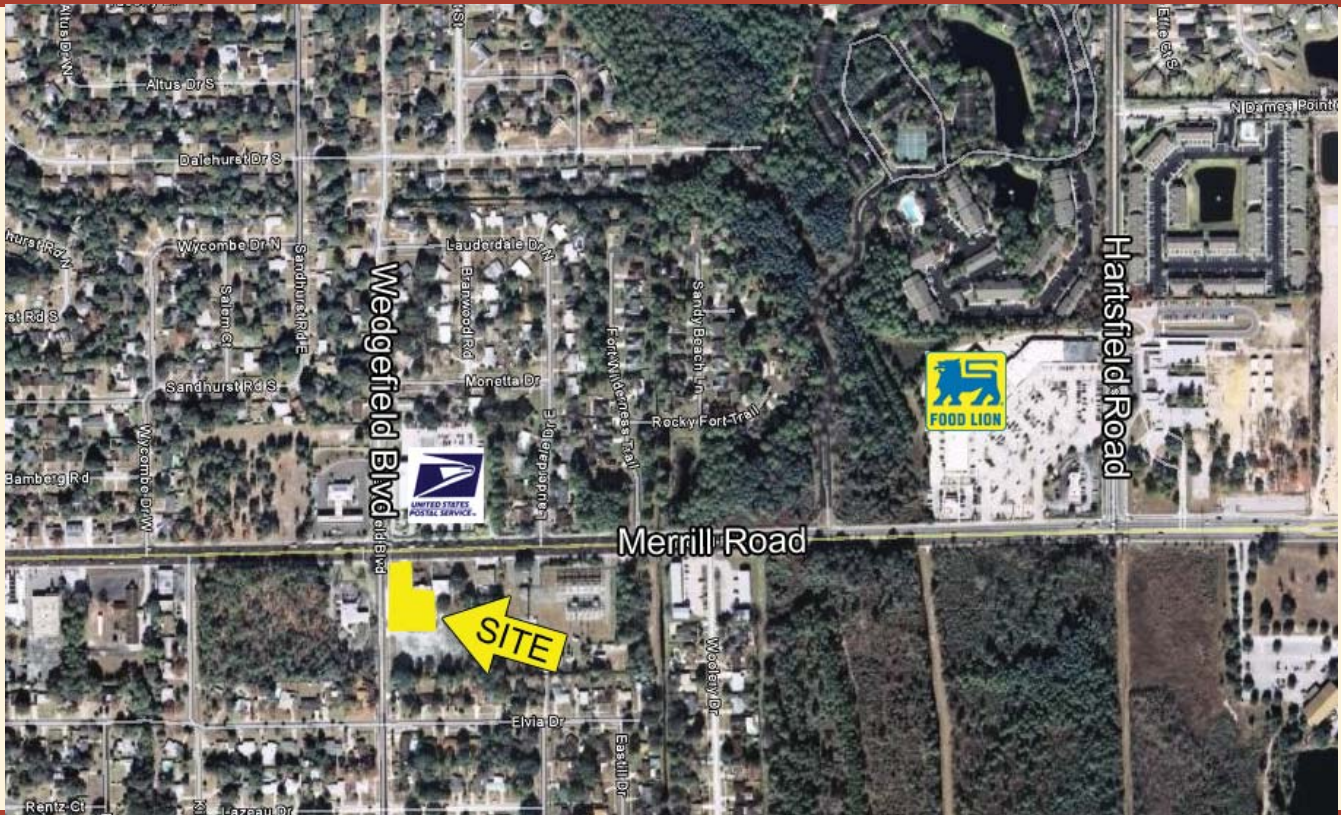
### NEARBY SHOPPING

- Lowes
- Wal-Mart
- Target
- Ross
- Food Lion
- NEW Big Lots

### NEARBY EATERIES

- McDonald's
- Subway
- Golden Corral
- Red Lobster
- Cracker Barrel
- Zaxby's
- Crispers
- Steak'n Shake

# CLOSED BUDDY FREDDY'S FOR SALE



## Area Demographics

	1 mile	2 miles	3 miles
2009 Pop	14,138	40,682	76,256
2009 HH	5,653	16,596	32,066
2009 Avg HH Income	\$58,743	\$57,884	\$55,325
2009 Day Pop	5,653	16,596	32,066
2009 Establishments	170	933	2,561
Florida Traffic Count: 22,400 cars per day on Merrill Road			

## Murphy Land and Retail Services

11555 Central Parkway • Suite 1102 • Jacksonville, FL 32224

Contact: **Tracy Ahearn** (904)-645-7281 | tahearn@murphylandretail.com