

PROMENADE AT BARTRAM SPRINGS

Racetrack Road & Bartram Springs Parkway • Jacksonville, FL 32258



18,000 SF RETAIL FOR LEASE



*OUTPARCEL OPPORTUNITIES

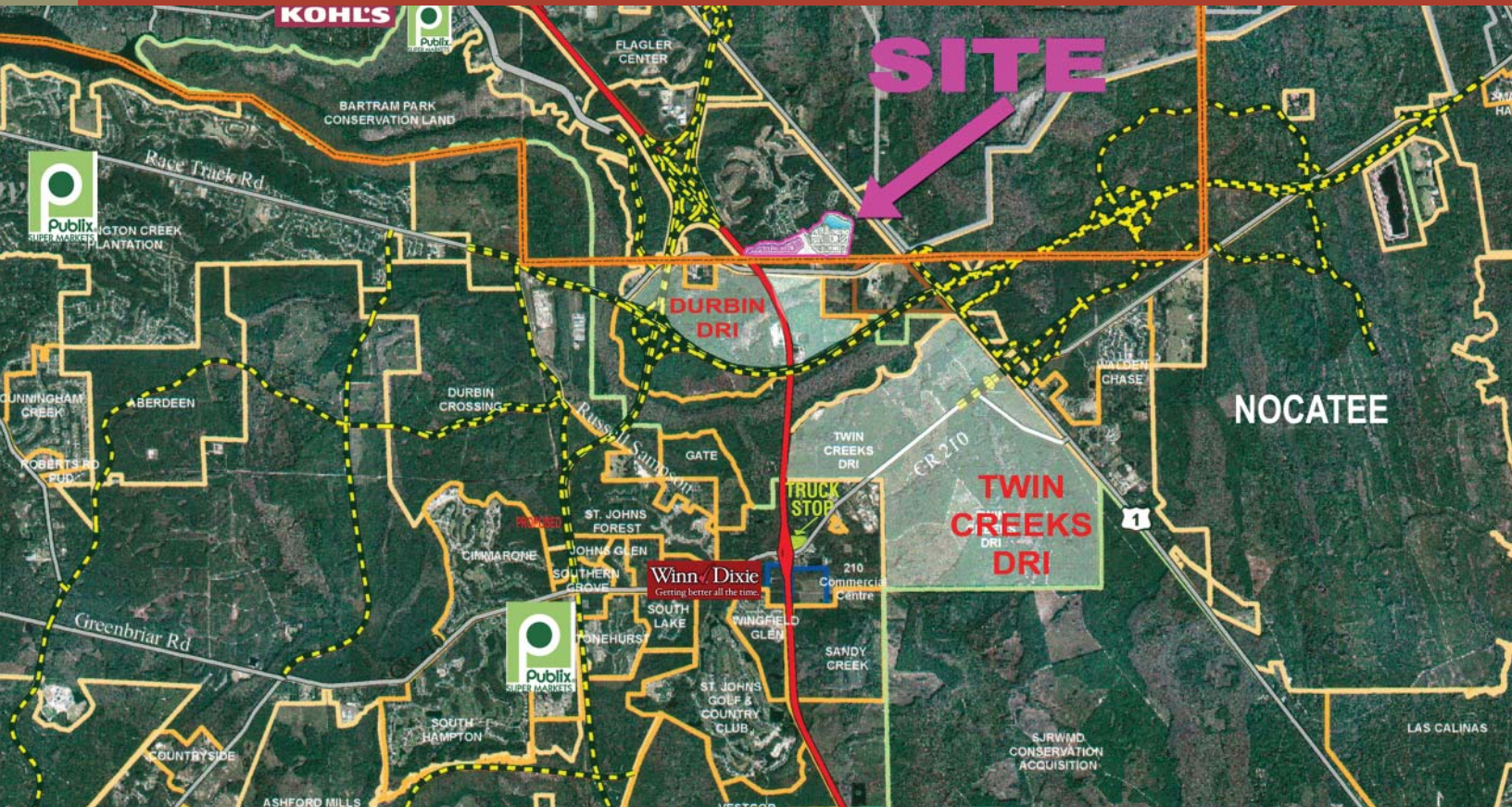
*IDEAL FOR FAST FOOD, GAS STATION, OR BANK

*SMALL SHOP SPACE AVAILABLE

*BRAND NEW DEVELOPMENT IN ST. JOHN'S COUNTY

PROMENADE AT BARTRAM SPRINGS

UNITS FOR LEASE



AREA HIGHLIGHTS

- Neighborhood Center at the entrance to Bartram Springs, 2000+ home community
- Five miles from Baptist Medical Center, with 800+ employees
- Growing Area with over 40,000 homes built, under construction, or planned
- Located directly on Race Track Road, with 16,000+ cars/day
- Outdoor patio seating, plenty of parking, on-site monument sign available

Murphy Land and Retail Services

11555 Central Parkway • Suite 1102 • Jacksonville, FL 32224

Contact: **Carrie Smith** (904)-645-7143